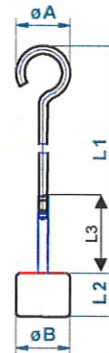
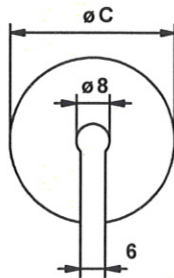


Maßtabelle für Schlitzgewichte und Trägerstangen



1. Trägerstangen

Nennwert	L1 in mm	L2 in mm	L3 in mm	Ø A in mm	Ø B in mm	Material	X1	X2	Art. Nr.
10g	113	4,5	58	20	14	Aluminium	100g	200g	347-445-100
100g	230	8	150	32	26	Messing	1kg	2kg	347-475-100
500g	605	34	380	40	40	Messing	10kg	20kg	347-495-100
1 kg	986	34	750	40	60	Messing	10kg	40kg	347-515-100

L3 = max. Aufnahmhöhe von Gewichten

X1 = größtes mögliches Einzelgewicht

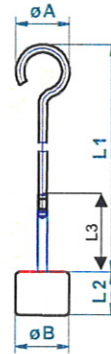
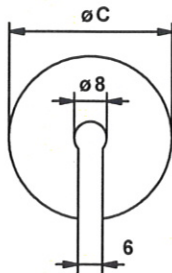
X2 = max. mögliches Gesamtgewicht

2. Schlitzgewichte

Nennwert	Ø C in mm	Höhe in mm	Material	Art. Nr.
1g	18	2,2	Aluminium	347-415
2g	18	4,4	Aluminium	347-425
5g	18	3,7	CuZn	347-435
10g	22	4,4	CuZn	347-445
20g	27	5,5	CuZn	347-455
50g	28	12,5	CuZn	347-465
100g	33	17	CuZn	347-475
200g	38	25	CuZn	347-485
500g	48	38	CuZn	347-495
1kg	80	25,5	CuZn	347-515
2kg	80	52	CuZn	347-525
5kg	100	81	CuZn	347-535
10kg	100	162	CuZn	347-545

englisch:

Dimensions of slotted weights and beam bars



2. Beam bars

Nominal value	L1 in mm	L2 in mm	L3 in mm	Ø A in mm	Ø B in mm	Material	X1	X2	Art. Nr.
10g	113	4,5	58	20	14	Aluminium	100g	200g	347-445-100
100g	230	8	150	32	26	Messing	1kg	2kg	347-475-100
500g	605	34	380	40	40	Messing	10kg	20kg	347-495-100
1 kg	986	34	750	40	60	Messing	10kg	40kg	347-515-100

L3 = max. height of weights

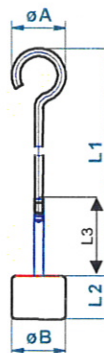
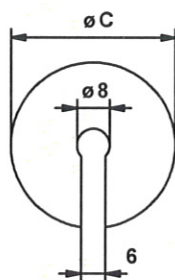
X1 = largest possible single weight

X2 = max. possible total weight

2. Slotted weights

Nominal weight	Ø C in mm	Height in mm	Material	Art. Nr.
1g	18	2,2	Aluminium	347-415
2g	18	4,4	Aluminium	347-425
5g	18	3,7	CuZn	347-435
10g	22	4,4	CuZn	347-445
20g	27	5,5	CuZn	347-455
50g	28	12,5	CuZn	347-465
100g	33	17	CuZn	347-475
200g	38	25	CuZn	347-485
500g	48	38	CuZn	347-495
1kg	80	25,5	CuZn	347-515
2kg	80	52	CuZn	347-525
5kg	100	81	CuZn	347-535
10kg	100	162	CuZn	347-545

Misure dei pesi fissurati e aste portapesi



3. Asta portapesi

massa	L1 in mm	L2 in mm	L3 in mm	Ø A in mm	Ø B in mm	materiale	X1	X2	Art. Nr.
10g	113	4,5	58	20	14	Aluminio	100g	200g	347-445-100
100g	230	8	150	32	26	Ottone	1kg	2kg	347-475-100
500g	605	34	380	40	40	Ottone	10kg	20kg	347-495-100
1 kg	986	34	750	40	60	Ottone	10kg	40kg	347-515-100

L3 = altezza massima da portare pesi

X1 = peso più grande possibile da mettere al gancio di sostegno

X2 = massa massima totale (pesi e gancio)

2. Pesi fissurati

massa	Ø C in mm	altezza in mm	materiale	Art. Nr.
1g	18	2,2	Aluminio	347-415
2g	18	4,4	Aluminio	347-425
5g	18	3,7	CuZn	347-435
10g	22	4,4	CuZn	347-445
20g	27	5,5	CuZn	347-455
50g	28	12,5	CuZn	347-465
100g	33	17	CuZn	347-475
200g	38	25	CuZn	347-485
500g	48	38	CuZn	347-495
1kg	80	25,5	CuZn	347-515
2kg	80	52	CuZn	347-525
5kg	100	81	CuZn	347-535
10kg	100	162	CuZn	347-545